



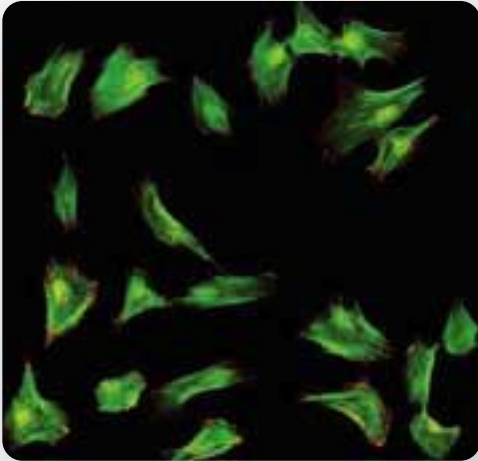
High Content Analysis. Precisely.

# CYTOO adhesive micropatterns

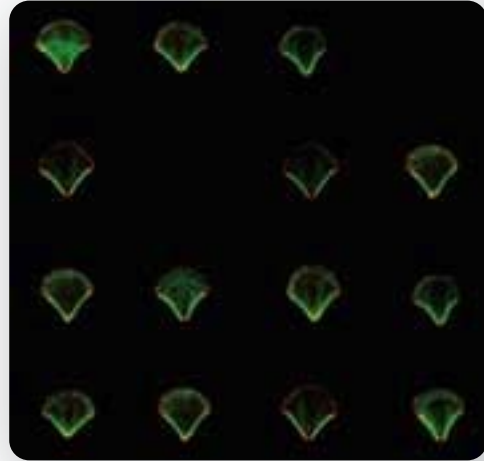
## A breakthrough in quantitative cell analysis

### 📌 TAKE CONTROL

Throughout the CYTOO array, cells adopt the same architecture.



*Cells in a standard culture dish*



*Cells cultured on CYTOO products*

Settled on a concave micropattern, cells adopt the convex envelope stretching out over the non-adhesive surface. The geometric distribution of adhesive contacts between cell and substrate induces the reproducible polarization of the cell machinery. Cell position, cell shape, cell polarity and internal cell organization are normalized.

### 📌 TAKE ADVANTAGE

Straightforward analysis, reliable results, faster discover

- Reduce cell to cell variability
- Control the location of cell compartments and protein networks
- Achieve simple and rapid image analysis
- Improve assay reproducibility
- Map a «standard» averaged cell to be used as a Reference Cell™

### 📌 TAKE THE LEAD

Cell biology and high throughput screening

Application assays:

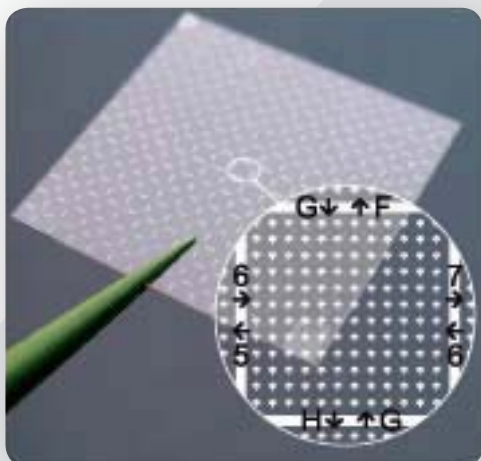
- Cell Shape and Actin Cytoskeleton
- Microtubule network
- Cell Polarity and Organelle Positioning
- Cell Division and Mitotic Spindle Orientation
- Quantitative Cell Phenotyping
- Cell signaling
- Toxicology
- ...

# CYTOO products

Designed for your needs

## CYTOOchips™

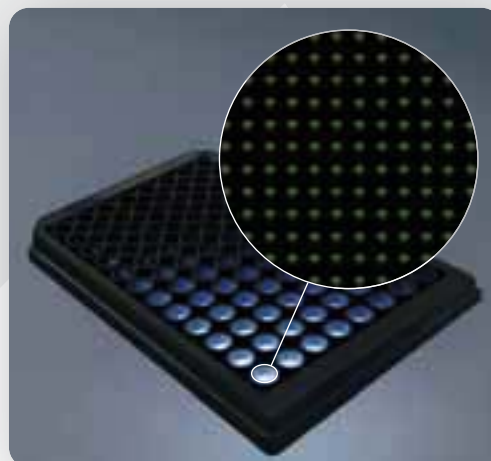
*for research*



The glass coverslip format with an array of up to 20,000 micropatterns and a printed grid for easy localization.

## CYTOOplates™

*for screening*



The standard glass bottom microplate format presenting over 1,000 micropatterns per well.

### ↑ INSTANT COMPATIBILITY

Compatible formats offer an easy transition from coverslips and microplates to CYTOO products.

### ↑ INFINITE POSSIBILITIES

Micropatterns are available in a variety of sizes and shapes. They can also be designed to meet the special needs of your cells and your application.

### ↑ HIGH PRODUCTION STANDARDS

Production is carried out in our class ISO 7 clean room facilities in Grenoble. Stringent control procedures ensure high quality products.



**Selected publications**

Nature Cell Biology 2005 7(10):947-53.  
Cell Motility and Cytoskeleton 2006 63(6):341-55.  
Proc Natl Acad Sci USA 2006 103(52):19771-6.  
Nature 2007 447, 493-496.  
Lab on a Chip Journal 2007 7, 672-680.  
Médecine & Sciences 2007 23:33, 230-232.  
Genes & Development 2008 22(16):2189-203.

**Partners**



**CELL ARCHITECTS**

CYTOO S.A.  
7, parvis Louis Néel  
Batiment BHT 52 - BP50  
38040 Grenoble cedex 9 - FRANCE  
Tel. +33(0) 438 88 47 05

CYTOO, Inc.  
161 Worcester Road - Suite 303  
Framingham - Massachusetts 01701 - USA  
Tel. +1 508.270.8870

[www.cytoo.com](http://www.cytoo.com) - [info@cytoo.com](mailto:info@cytoo.com)